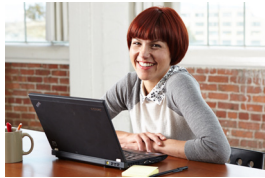


All Covered Cloud Servers Competitive Comparison

All Covered Cloud Servers provides a host of features that many other companies are unable to offer. Our flexible service delivery model allows for custom server configurations, standard backup service with 14-day retention, optional direct network connections, variable licensing models, as well as management and implementation services to wrap it all together.



Competitive Comparison Overview

Features and Functions	Rackspace	Amazon Web Services (AWS)	Terremark vCloud Express	All Covered Cloud Servers
FLEXIBLE RESOURCES				
Any amount of RAM, CPU and storage	Limited	✓	Limited	✓
Ability to collocate client owned equipment in data center with Cloud Servers	✗	✗	✗	✓
Allows private network circuits to client offices	✗	✓	✗	✓
High-speed SAS storage option	✓	✗	✗	✓
BACKUP, DISASTER RECOVERY AND BUSINESS CONTINUITY				
14-day backup included	✗	✗	✗	✓
Option for flexible backup retention periods	✓	✗	✗	✓
Option for data center failover	✗	✓	✗	✓
MANAGED IT SERVICES AND PROJECT DEPLOYMENT				
Availability of application-level managed services	Limited	✗	✗	✓
Cloud migration services available	✗	✗	✗	✓
MONTHLY SUBSCRIPTION-BASED LICENSING				
Full suite of Microsoft software products	✗	✗	✗	✓
Full suite of Citrix software products	✗	✗	✗	✓
Blackberry Enterprise monthly licensing	✗	✗	✗	✓
Full suite of McAfee software products	✗	✗	✗	✓

Competitive features based on information at time of printing and may be subject to change.

* AWS charges per hour of connection plus per GB transfer fees, price may vary significantly month to month

** AWS requires payment for two servers to provide redundancy for data center failure

Contact All Covered Toll-Free Nationwide at [866-446-1133](tel:866-446-1133) or visit www.AllCovered.com



KONICA MINOLTA

KONICA MINOLTA BUSINESS SOLUTIONS U.S.A., INC.
100 Williams Drive, Ramsey, New Jersey 07446

CountOnKonicaMinolta.com



Item #: AllCoCompCom
6/15-L